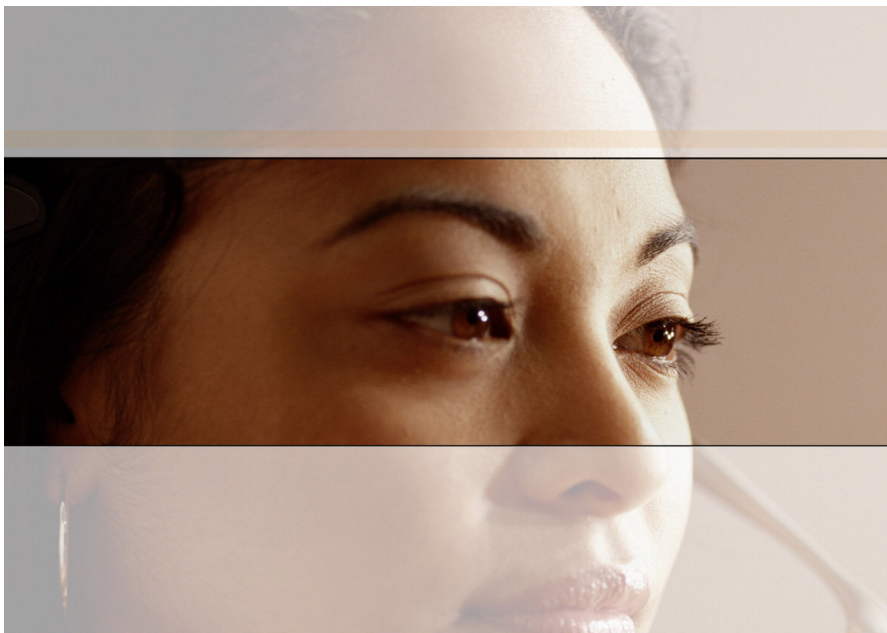


MyWave® Portal

Click+Connect+Communicate

Welcome to a whole new way of working—MyWave® is your personalized website that allows you to effortlessly click, connect and communicate with Carriage Trade Insurance Agency, Inc..

It's designed to offer you time-saving tools and resources that build convenience into managing your everyday work tasks. Whether you want to view documents online, participate in plan/program surveys or connect with more than 325,000 peers in your industry, this is the place to be. It's easily accessible, hardworking and just one of the many services available to you when you partner with us.



"The Community section allows us to easily find out what other companies are doing in a variety of situations. I can get answers quickly from other colleagues in the industry; the Community has become my personal sounding board."

Trevor, MyWave Portal User, Northeast

Posting Center

- Our document posting capabilities allow us to seamlessly provide you information.
- Accessible 24/7, postings from our agency are timely, relevant and easy to locate in one convenient place online.

Health Care Reform

- Get the information you need about health care reform, including legislative updates, explanations and timelines.
- Provide your employees the education they need to understand how reform impacts their lives.

Survey Benchmarking

- Participate in benefit plan and/or P&C program surveys.
- Allows you to determine how your plans and programs compare to other employers across the U.S.

Community

- Through MyWave® Community, you have access to a vast and knowledgeable network of colleagues from across the country.
- Share information and resources via the Community's interactive forum that enables you to post questions to your peers, provide insight into other users' questions, and allows you to track response based on topics or individual questions.
- Community postings are organized by topic so you can source information quickly and easily.